

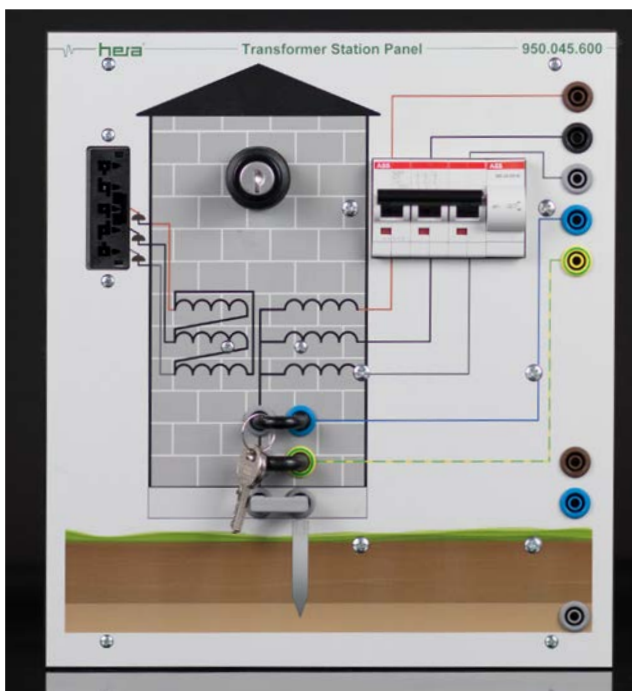
DOMESTIC POWER DISTRIBUTION

The Domestic Distribution System consists of a Transformer Station 230V/400V (equipped with isolating transformer) with key release and automatic circuit breaker with undervoltage release, as well as the Mains Distribution Panel, which is supplied by the Transformer Station.

Learning Content:

- Basics to TN - , TT -, IT networks
- Domestic mains distribution box
- Equipotential bonding
- Fuse - or meter box
- Types of earth contact and specific earth contact
- Wenner and Schlumberger method
- System earth and operational earth
- Types of earth measurement for installations
- Testing the operational earth
- Lighting protection (inhouse and outdoors)

>> Operating voltage: 400V, 3phase, 50/60Hz >>
 Dimensions: 532 x 297mm (WxH)

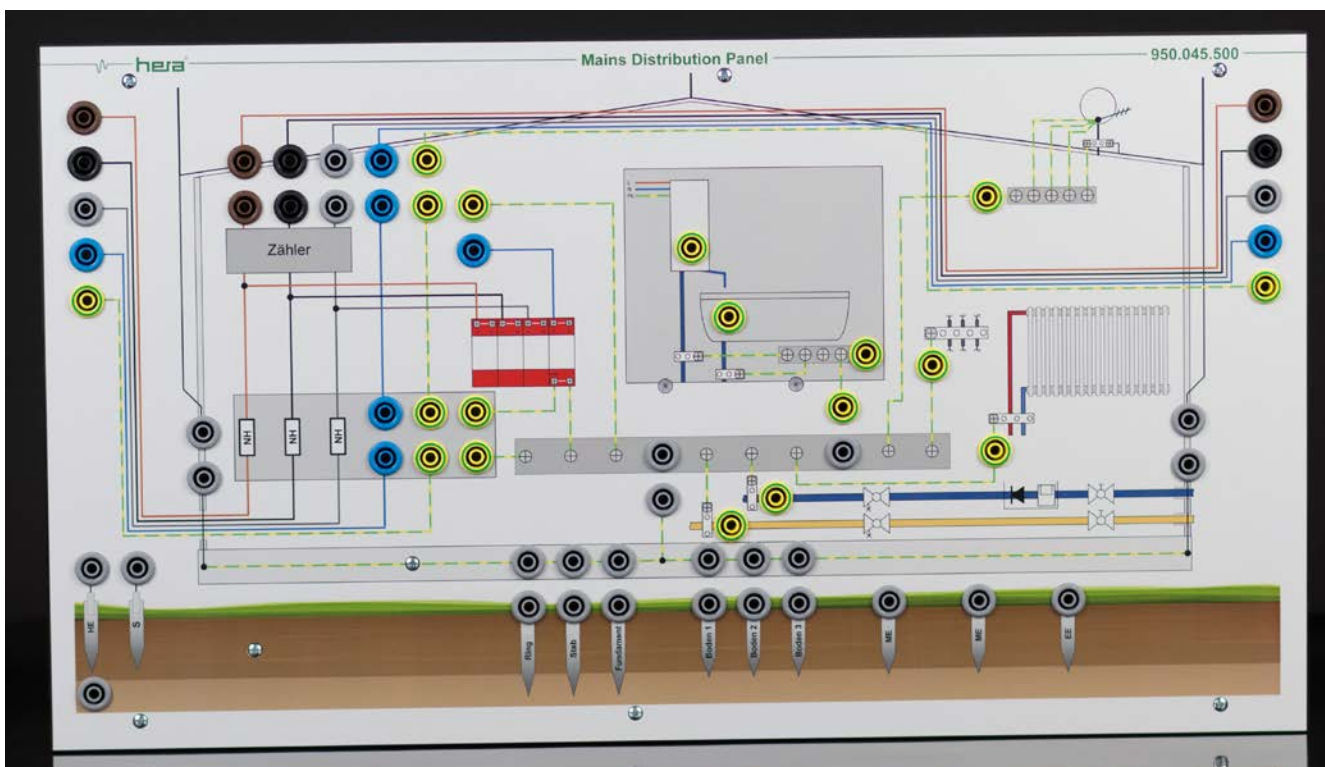


Transformer Station 230/400V 950.045.600 (266 x 297mm)

Your local Partner

EL ESLEK

1, rue Montevideo, 2000 Le Bardo, Tunisia
 Tel. : +216 71 58 46 90 – Fax : +216 71 58 43 55
 contact@eleslek.com



Mains Distribution Panel 950.045.500 (532 x 297mm)

Domestic Power Distribution

950.045.600	Transformer Station 230/400V	950.045.561	Manual with CD, Domestic Power Distribution
950.045.500	Mains Distribution Panel	950.045.550	Set of Cables and Connectors